



Dasher

Datasheet





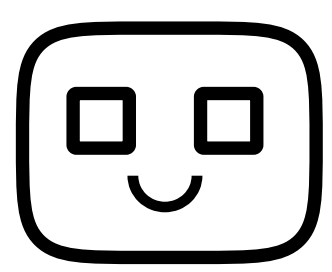
Dasher

A Smart Delivery Companion

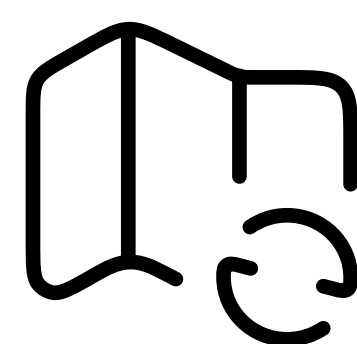
Welcome to the world of innovation and automation with Falcon Tech Robotics! Dasher is not just a robot; it's your charming delivery companion, designed to revolutionize your operations & enhance customer experiences. Dasher's adorable bionic design and cutting-edge technology combine to offer an array of benefits, ensuring efficient in-house delivery service that keeps food piping hot and mail delivered on time.

Dasher becomes a part of your business, streamlining operations like never before. Whether you're in the restaurant industry or managing office spaces, Dasher is here to exceed your expectations.

Key Features



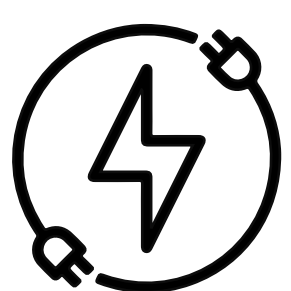
Smart Expression



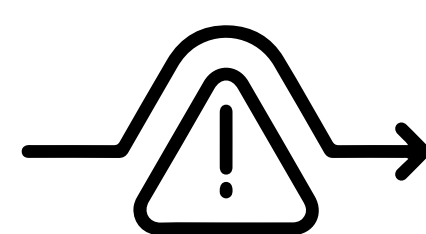
Autonomous Navigation



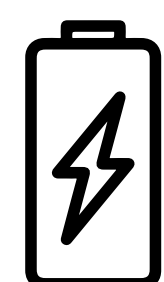
Supporting Voice Control



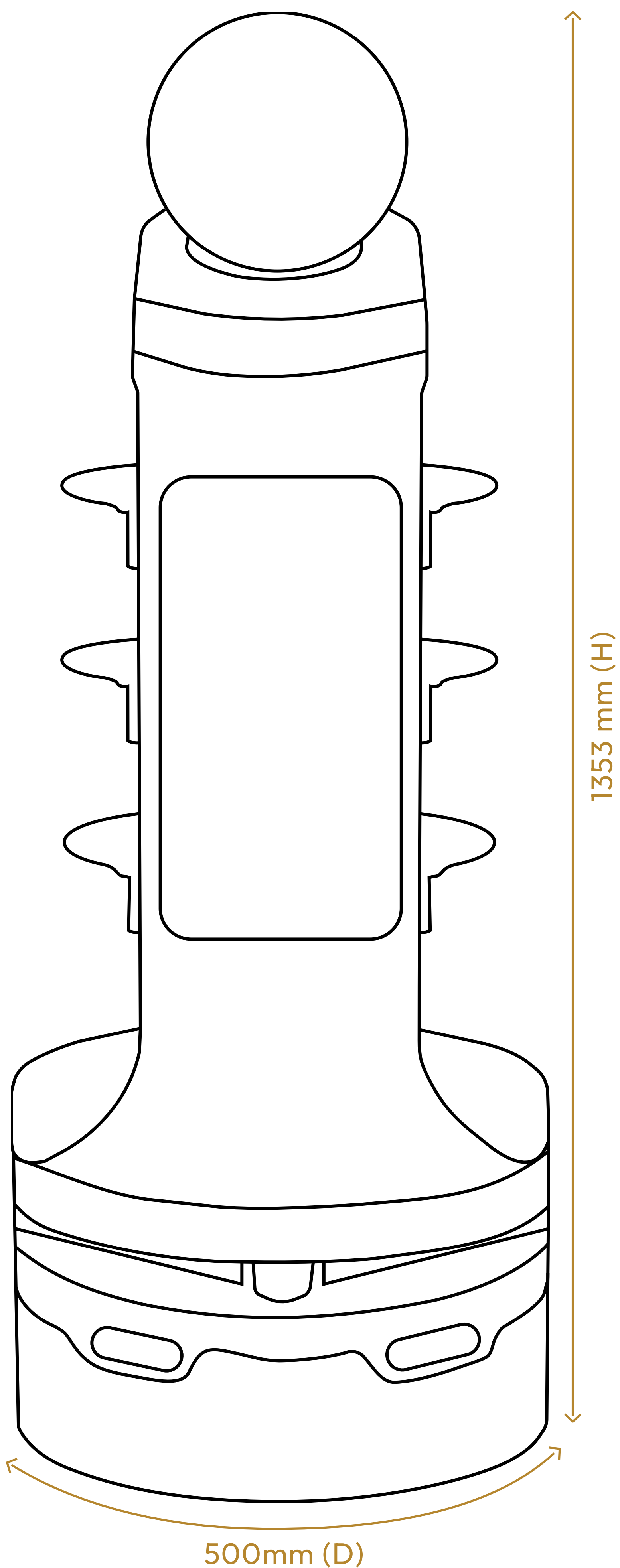
Automated Charging



Smart Obstacle Avoidance



8+ Hour of Battery Power



Physical Specifications

Color	Black, White
Weight	48.5 kg
Chassis	3mm, 4mm Mild Steel
Suspension	Aluminum
Support Frame	2mm Mild Steel
Body	Thermoplastic

Power and Battery Systems

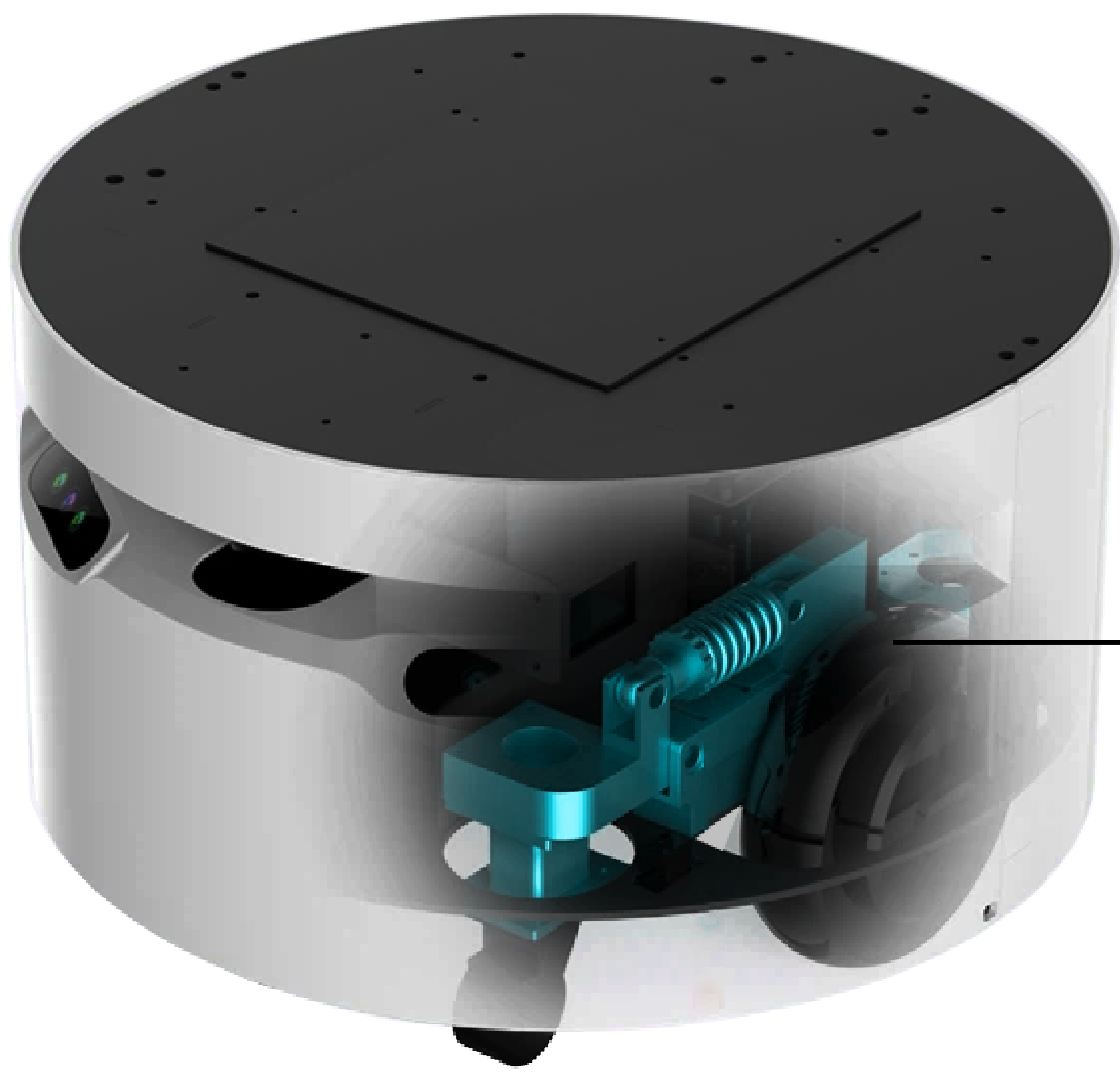
The robot's advanced Battery Management System ensures that Dasher automatically returns to the charging station for recharging. Additionally, the charging station's default power-off feature enhances safety by activating power only during the robot's recharging process, preventing unexpected situations.

Battery Type	Lithium-Ion 24V/25Ah
Battery Life	8+ Hours
Power Adapter	Input: AC110-240V, 50/60Hz, Output: DC24V/7Ah
Overcurrent Protection	Yes
Intelligent Power Management	Yes
Power Button	Yes





Vision & Mobility System



- **Independent Suspension System**

Dasher's Independent Suspension System ensures stability and precision, allowing it to navigate various terrains with ease.

Navigation

Motor Driven	6.5-inch Hub Motor
Gyro	Single axis high precision attitude sensor
Mapping & Navigation	Dual SLAM Technology
Max Speed	Up to 4 kmph

LIDAR Sensors

Type	Single line lidar
Wavelength	905nm
Working area	270 degrees
Range	25 mtrs

Camera

Type	Dual Depth Camera System
Resolution	Up to 1280 x 720
Frame rate	90 fps
Range	Up to 10 mts
Pixel resolution	2 MP, RGB sensor

Button

Emergency Button	Yes
One Touch Button	Yes



Display Specification

Dasher features two display screens to enhance interaction and control. Face Display is for real-time telemetry and diagnostics and Body Display is for messaging and promotions.

Screen Type	Capacitive Touch Screen
Face Display	
Screen Size	7 Inches
Resolution	1024 x 600 Pixels
Touch Sensitivity	Yes
Body Display	
Screen Size	18.5 Inches
Resolution	1366 x 768 Pixels
Touch Sensitivity	No

Other Technical Specifications:

Processing System

CPU	Quad-core Cortex-A7, up to 1.2GHz
OS	Android
Hard Disk	256GB High-Speed SSD
Memory	4GB RAM
Built-in clock	RTC

Navigation System

CPU	Intel® Core™ i5 Processor
OS	Linux
Hard Disk	32GB High-Speed SSD

Other Specifications

Wi-Fi Support	Dual-Band (2.4GHz & 5GHz)
External I/O Port	Micro USB 2.0 RJ45 Network Port HOST*3



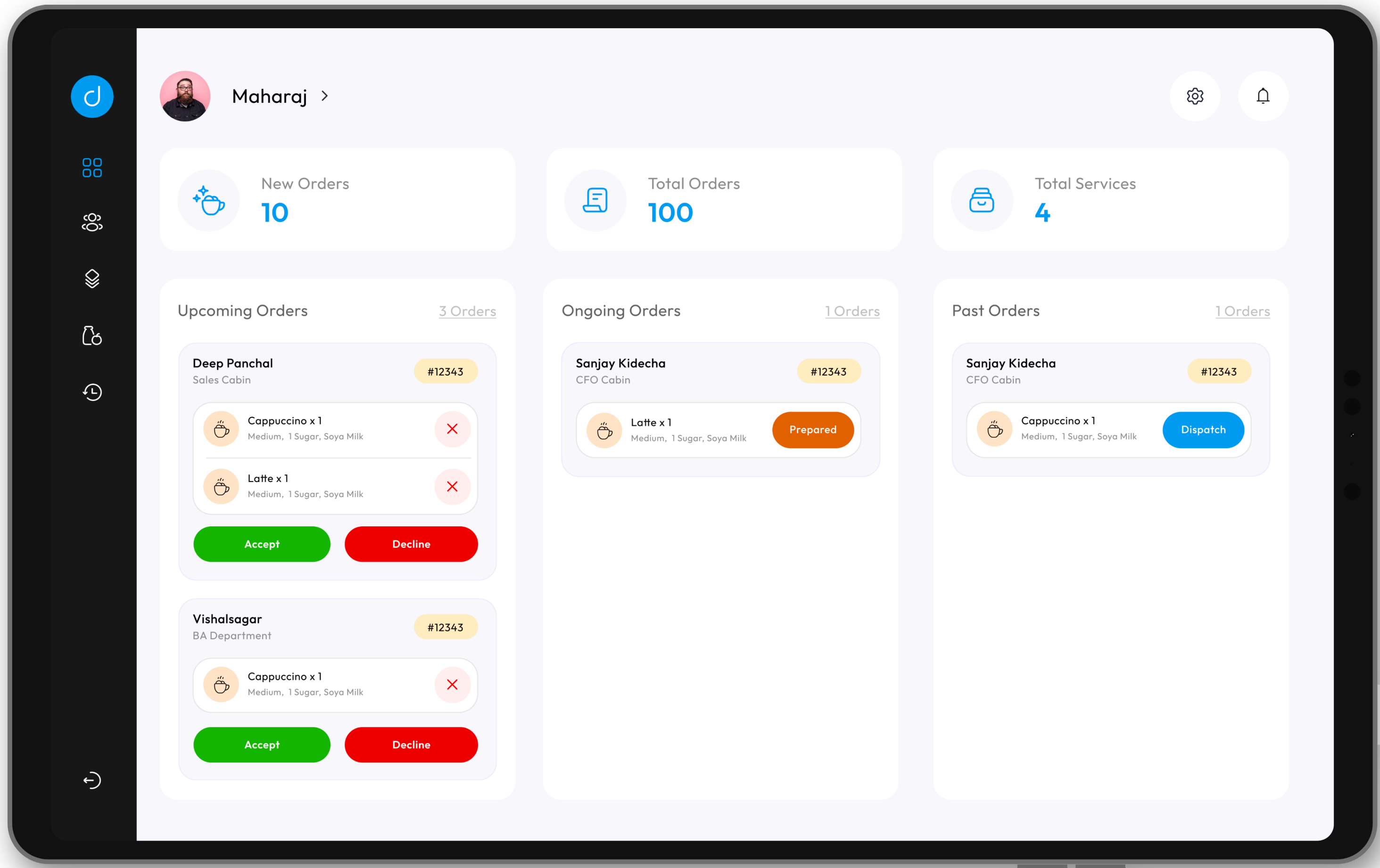
The Dasher Control System

Effortlessly manage Dasher and your Operations

The Dasher control system simplifies and optimizes the management of Dasher and your operations. It is a comprehensive system that ensures efficient and hassle-free in-house deliveries, whether you run a restaurant or office space.

The control system provides with an intuitive dashboard for streamlined supervision, real-time monitoring for on-the-spot delivery oversight, and menu customization to cater perfectly to your customer's preferences.

Managing your employees and inventory becomes a breeze, and you can access detailed analytics to make data-driven decisions. Elevate the overall dining or working experience by offering effortless, secure ordering, quick reordering, service requests, real-time order tracking, and timely notifications.



✓ Intuitive Dashboard

✓ Real Time Monitoring

✓ Menu Customization

✓ Employee Management

✓ Inventory Control

✓ Detailed Analytics

Disclaimer:

We reserve the right to make technical changes to the products and changes to the contents of this document at any time without any prior notice. For orders, the respective agreed properties are decisive. Falcon Tech Robotics assumes no responsibility for any errors or omissions in this document. We reserve all the rights to this document and the objects and illustrations contained herein.

Reproduction, disclosure to third parties or exploitation of its contents even in part is prohibited without the prior written consent of Falcon Tech Robotics.

+971 52 595 7037

www.falcontechrobotics.com

sales@falcontechrobotics.com